



DIAMOND
COATINGS



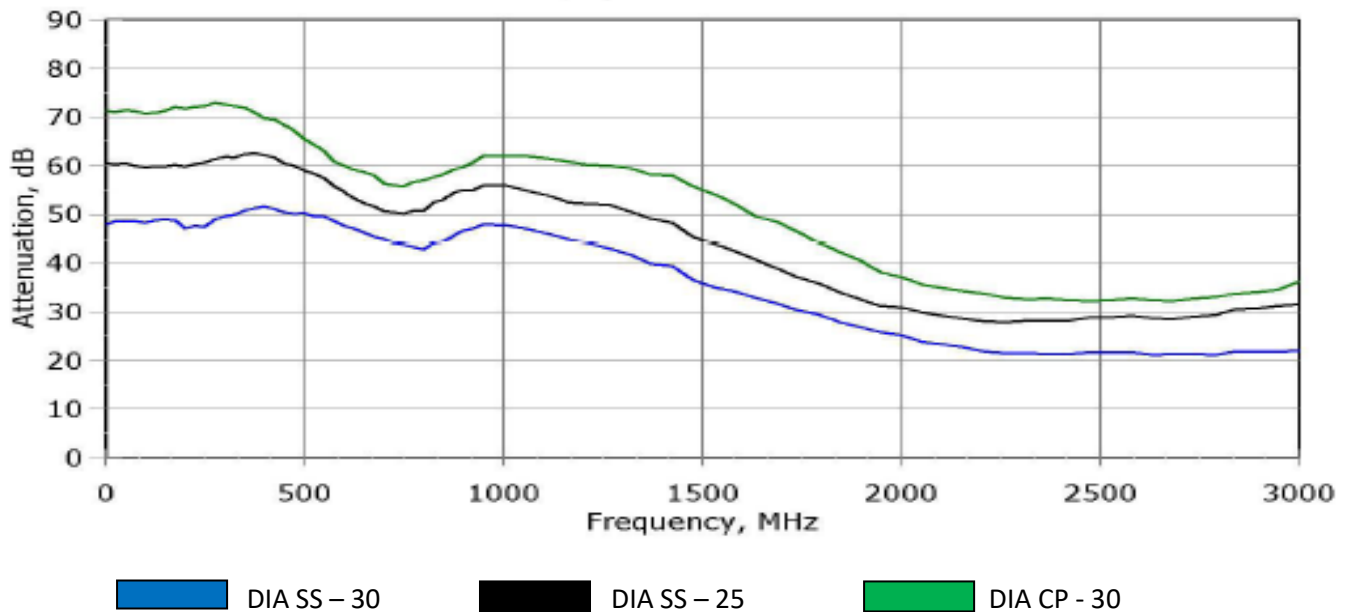
Diamond Mesh Datasheet

DIAMOND MESH

Electromagnetic Shielding Properties

Performance characteristics

EM Nearfield, open area 400 x 300 mm



OPTICAL PROPERTIES

DIAMOND COATINGS LTD.

Unit 3&4 Sterling Park, Pedmore Road,
Brierley Hill,
West Midlands, DY5 1TB
Tel: +44 (0) 121 550 9430
Email: enquiries@diamondcoatings.co.uk
Web: www.diamondcoatings.co.uk

DIAMOND COATINGS INC.

4830 S. 36th Street,
Phoenix, Arizona,
85040
Tel: +1 (480) 999 3456
Email: sales@diamondcoatings.com
Web: www.diamondcoatings.com



DIAMOND
COATINGS



Diamond Mesh Datasheet

Material / Mesh Type	Transmission
DIA SS – 30	81%
DIA SS – 25	75%
DIA CP – 30	72%

SS – STAINLESS STEEL

CP – COPPER

MECHANICAL PROPERTIES

Parameter (Selected)	Test	Values
Tensile Strength (Rupture)	DIN 53455	65–68 MPa
Elongation at rupture	DIN 53455	3–4 %
Flexural Strength (Rupture)	DIN 53452	120 MPa
Specific heat	–	1.46 J/g °C
Heat stability-Vicat (3mm)	DIN 53460	110 °C
Linear thermal exp. coefficient	VDE 0304	0.08mm/m °C ¹⁻
Thermal conductivity	–	0.186 W/m K
Refractive index	–	1.49
Fire behaviour	UL94	HB

DIAMOND COATINGS LTD.

Unit 3&4 Sterling Park, Pedmore Road,
Brierley Hill,
West Midlands, DY5 1TB
Tel: +44 (0) 121 550 9430
Email: enquiries@diamondcoatings.co.uk
Web: www.diamondcoatings.co.uk

DIAMOND COATINGS INC.

4830 S. 36th Street,
Phoenix, Arizona,
85040
Tel: +1 (480) 999 3456
Email: sales@diamondcoatings.com
Web: www.diamondcoatings.com